



Melody cVc and APTX Enabler

1. Introduction

The Melody cVc and APTX enabler Tool is a 32 bit Windows application that configures Melody on the BC127 and BC128 to enable cVc and APTX with a demo license key and Bluetooth address.

This application note describes the main functionality of the tool and how to use it to enable cVc and APTX and later revert to the original Bluetooth address.



Melody cVc and APTX Enabler

Table of Contents

1. Introduction	1
2. Installation	3
3 Enabling cVc and APTX	4
3.1 Introduction	4
3.2 How to Enable cVc and APTX	4

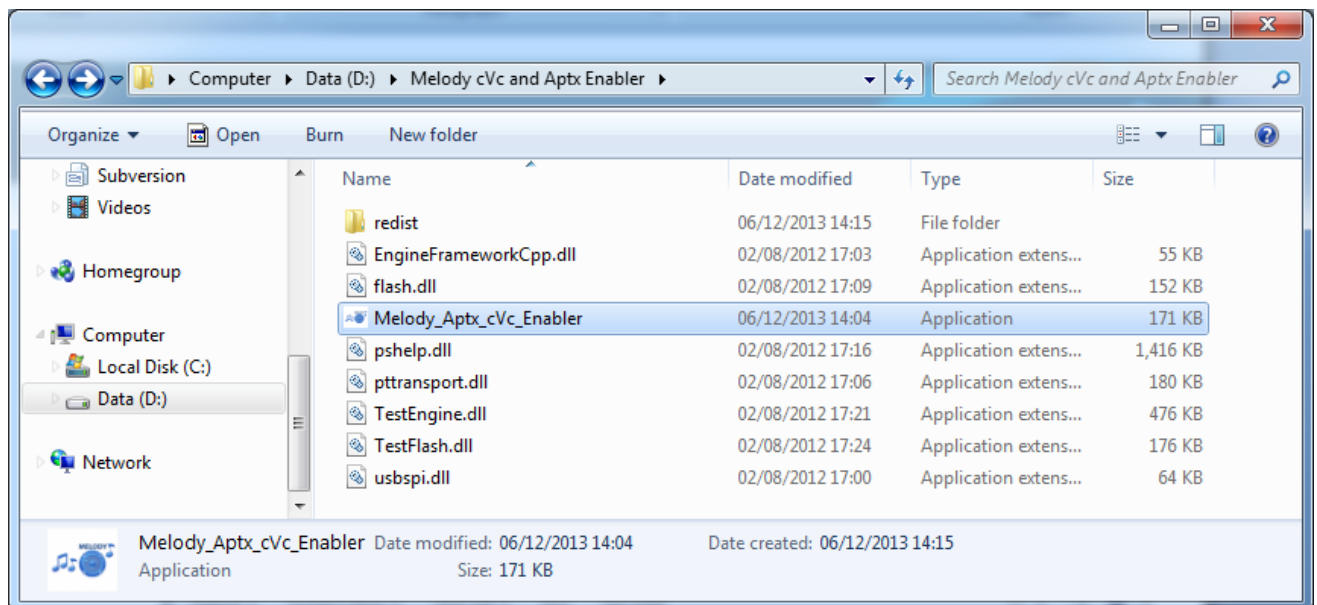


Melody cVc and APTX Enabler

2. Installation

The tool has some prerequisites that need to be available on the Windows machine to operate properly. After unpacking the tool to the desired location, you will end up with the following set of files:

- Application Files (folder)
- Melody DFU (application)
- Redists (This tool requires Visual Studio 2012 and .NET redistributables).



If this is the first time running the tool on Windows, the installer in the redist folder needs to be installed for the prerequisites, this will make sure all the prerequisites are available and if not, it will download and install them and the following window will be displayed.

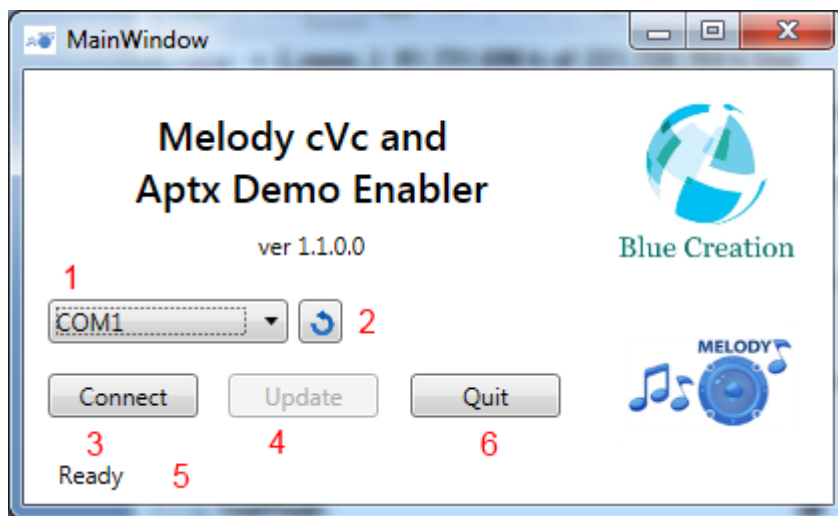


Melody cVc and APTX Enabler

3 Enabling cVc and APTX

3.1 Introduction

Once the tool is started, the following window will open.



The following is an outline of each part of the window:

1. The COM port where Melody is connected: this box is updated when the application is starting, therefore, it might not contain all the COM ports if they are connected to Windows afterwards.
2. Refresh the COM ports: In case the Melody is connected afterwards, this button can be used to refresh the available COM ports.
3. Connect to melody using the COM port selected.
4. Update melody Bluetooth address and license keys
5. Status of the current operation.
6. Quit the application

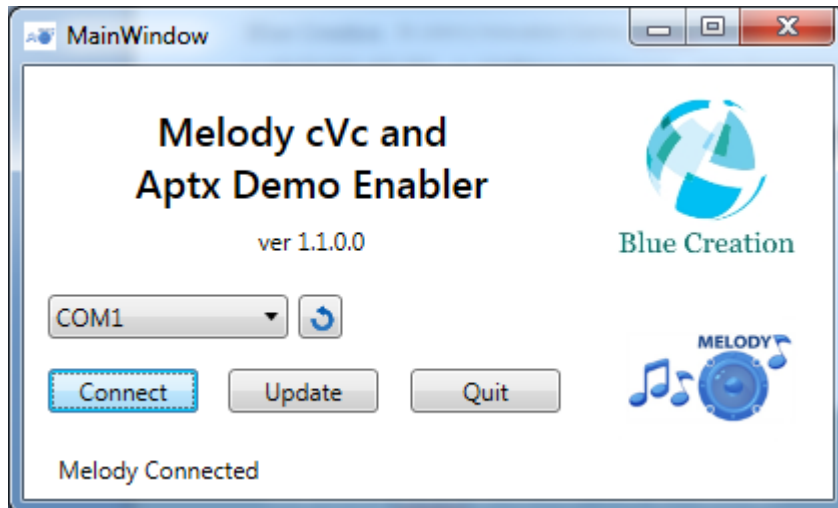
3.2 How to Enable cVc and APTX

This section will go through the upgrade process after starting the application.

1. Select the correct COM port and press the **connect** button.

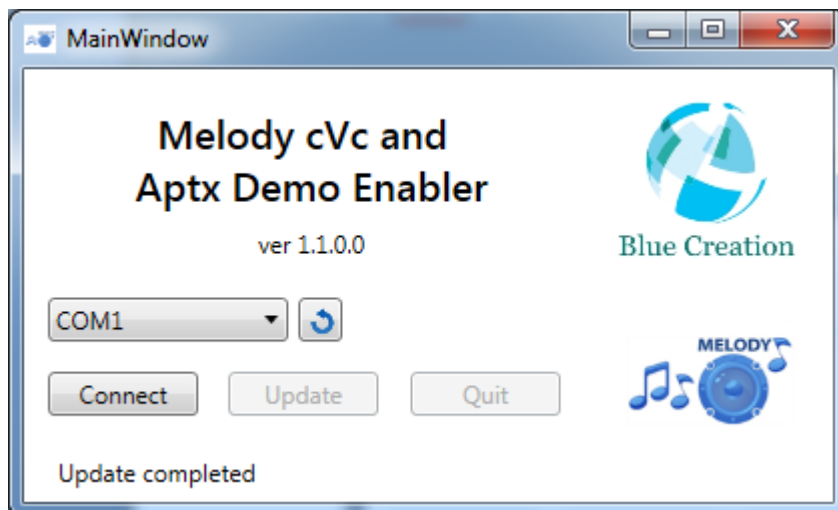


Melody cVc and APTX Enabler



2. If the connection was successful, the status bar will show "Melody Connected"
3. Press **update** button to modify melody.

When the modification is completed, the following window be present and the status bar will show "Update completed"



After an update, it will be needed to press the reset button to get melody into UART mode. To check that melody was updated correctly, connect to melody and check the Bluetooth address and licenses. if everything is correct, you should be able to see something like the following screenshot:



Melody cVc and APTX Enabler

